

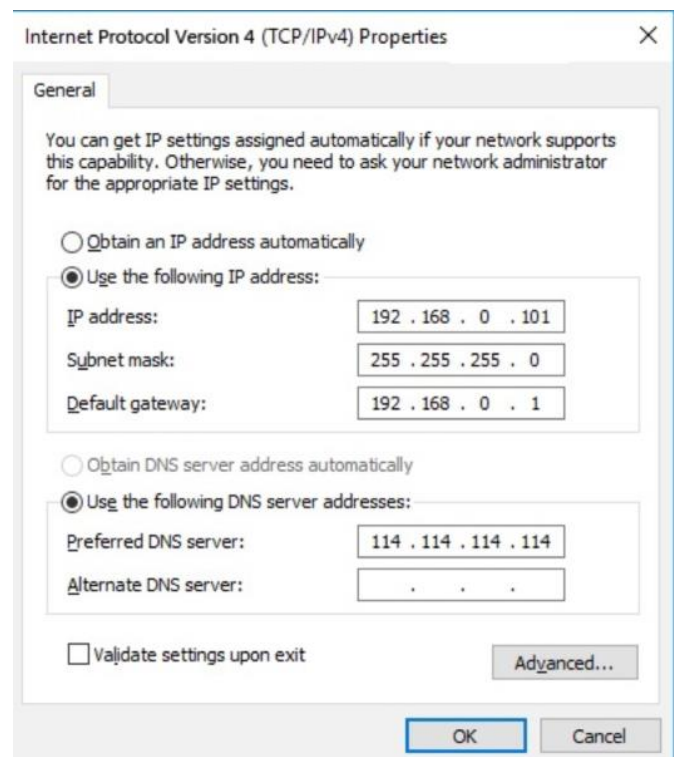
# BLOKFORGE

## INSTRUCTIONS: RASPBERRY PI 3 MODEL B

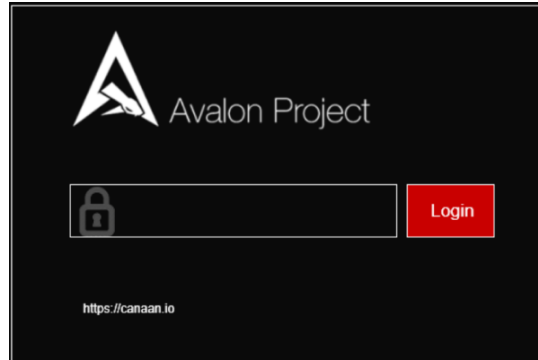
**STEP 1:** Connect the power to the controller, and make sure the controller and computer is configured to be connected to the same network. (Also, you can use the controller while having the computer network cable directly connected into the controller)



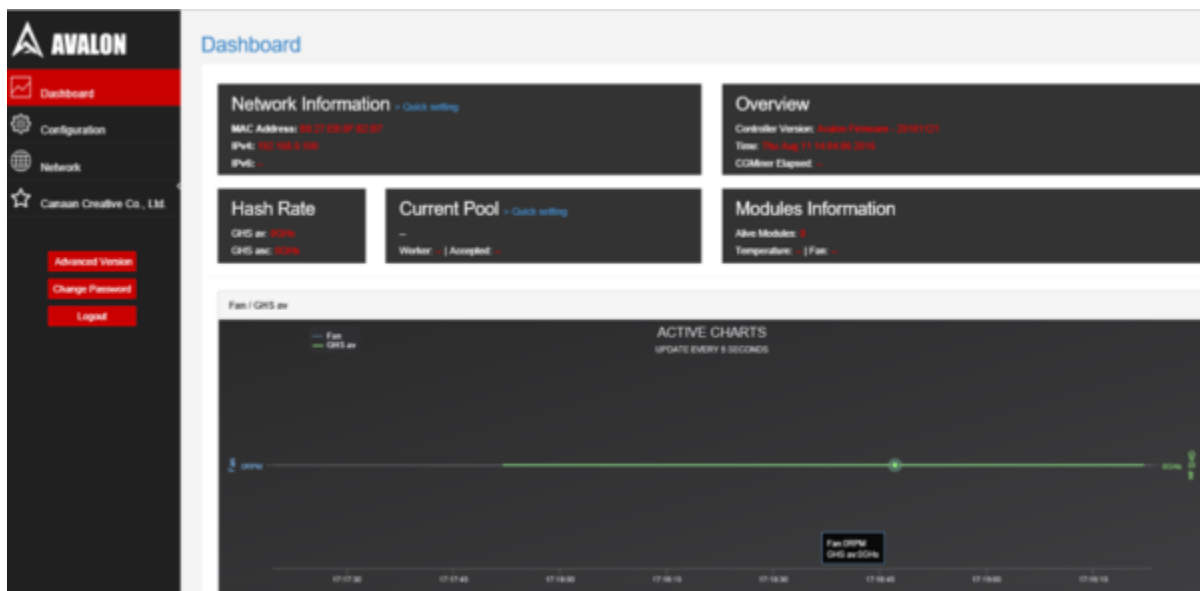
**STEP 2:** The default IP for the controller is 192.168.0.100. The IP address of the computer needs to be adjusted access to the controller.)



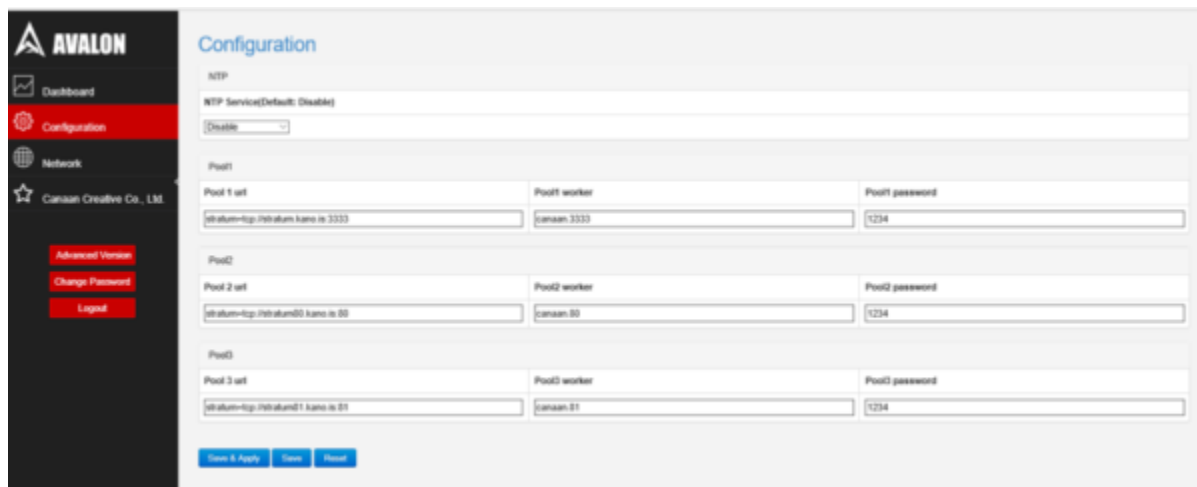
**STEP 3:** Use your browser to access “192.168.0.100”, and you will see the following login screen.



**STEP 4:** There is initially no password, so click Login to load the next interface. Once on the dashboard, click on Change Password to create a password.



**STEP 5:** You can click Configuration to configure your ore miners and see your pool information. For example, you can set up three pools and corresponding ore miners with the default execution priority pool1> pool2> pool3.)



**STEP 6:** If you need to change the network settings for the controller, click on Network to configure, click Save & Apply, and then power down your unit, and manually restart the controller.)



**STEP 7:** After the configuration, Change your computer back to the automatic acquisition of IP.

**STEP 8:** If the controller is properly connected to the Internet, you will see mining pools and miners setup such as AvalonMiner 741 and 721. As long as they are correctly connected via AvalonMiner USB Converter to this controller, you will see them on the overview page and see relevant information on these devices.)

